

PICK YOUR ROUTE

We are located on the cycle path network surrounded by a great range of traffic-free routes. Explore the map and discover the right route for you.

PINK ROUTE: BENINGBROUGH HALL

This ride, along Sustrans Route 65 follows cycle paths alongside the River Ouse, and then a very quiet, virtually traffic-free country lane before briefly joining a lightly trafficked road before you arrive at Benningbrough Hall, a magnificent stately home with gardens, play areas, art gallery and café.

9 MILES EACH WAY
NO HILLS

ORANGE ROUTE: OSBALDWICK AND BACK

This scenic ride takes you through both parts of the University of York, on fine cycle paths, then through the village of Osbaldwick, and onto a long cycle path taking you back towards town, and onto the riverside cycle path which takes you back to Get Cycling.

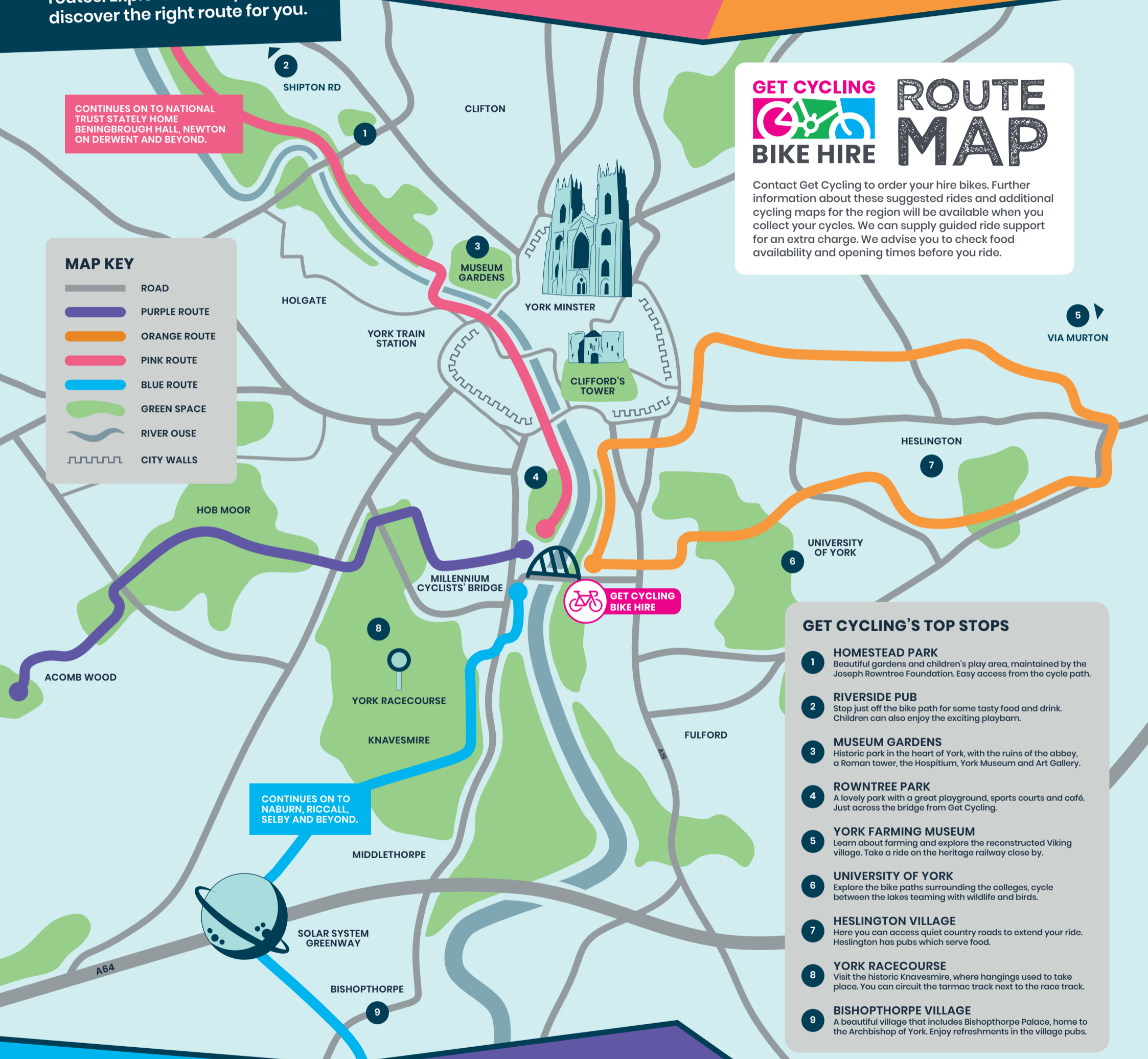
8 MILES
1 HILL ON CYCLE PATH

GET CYCLING BIKE HIRE ROUTE MAP

Contact Get Cycling to order your hire bikes. Further information about these suggested rides and additional cycling maps for the region will be available when you collect your cycles. We can supply guided ride support for an extra charge. We advise you to check food availability and opening times before you ride.

MAP KEY

-  ROAD
-  PURPLE ROUTE
-  ORANGE ROUTE
-  PINK ROUTE
-  BLUE ROUTE
-  GREEN SPACE
-  RIVER OUSE
-  CITY WALLS



GET CYCLING'S TOP STOPS

- 1 HOMESTEAD PARK**
Beautiful gardens and children's play area, maintained by the Joseph Rowntree Foundation. Easy access from the cycle path.
- 2 RIVERSIDE PUB**
Stop just off the bike path for some tasty food and drink. Children can also enjoy the exciting playbar.
- 3 MUSEUM GARDENS**
Historic park in the heart of York, with the ruins of the abbey, a Roman tower, the Hospitium, York Museum and Art Gallery.
- 4 ROWNTREE PARK**
A lovely park with a great playground, sports courts and café. Just across the bridge from Get Cycling.
- 5 YORK FARMING MUSEUM**
Learn about farming and explore the reconstructed Viking village. Take a ride on the heritage railway close by.
- 6 UNIVERSITY OF YORK**
Explore the bike paths surrounding the colleges, cycle between the lakes teeming with wildlife and birds.
- 7 HESLINGTON VILLAGE**
Here you can access quiet country roads to extend your ride. Heslington has pubs which serve food.
- 8 YORK RACECOURSE**
Visit the historic Knavesmire, where hangings used to take place. You can circuit the tarmac track next to the race track.
- 9 BISHOPTHORPE VILLAGE**
A beautiful village that includes Bishophthorpe Palace, home to the Archbishop of York. Enjoy refreshments in the village pubs.

BLUE ROUTE: YORK TO NABURN

This ride takes you along Route 65 to the South. It's famous for the amazing Solar System Greenway ride. Where models of the planets are distributed along the route to the correct scale. Adventurous riders go beyond Naburn following the path to Selby.

6 MILES EACH WAY
LARGELY TRAFFIC-FREE

PURPLE ROUTE: YORK TO ACOMB WOOD

This short and easy ride takes you on advisory cycle routes through the suburbs of York, then onto the Knavesmire green space before crossing Hob Moor, one of the ancient commons of York. The ride finishes at Acomb Wood, with mixed woodland and ancient meadow.

2.5 MILES EACH WAY
1 SHORT HILL

GO FURTHER...

If you want to explore further outside of York you can use the Sustrans cycle route network. We recommend the West Yorkshire Cycle Map Number 29. This map includes Route 65 extending beyond Naburn and Benningbrough. You'll find many delightful routes leaving York, perfect for more adventurous journeys.